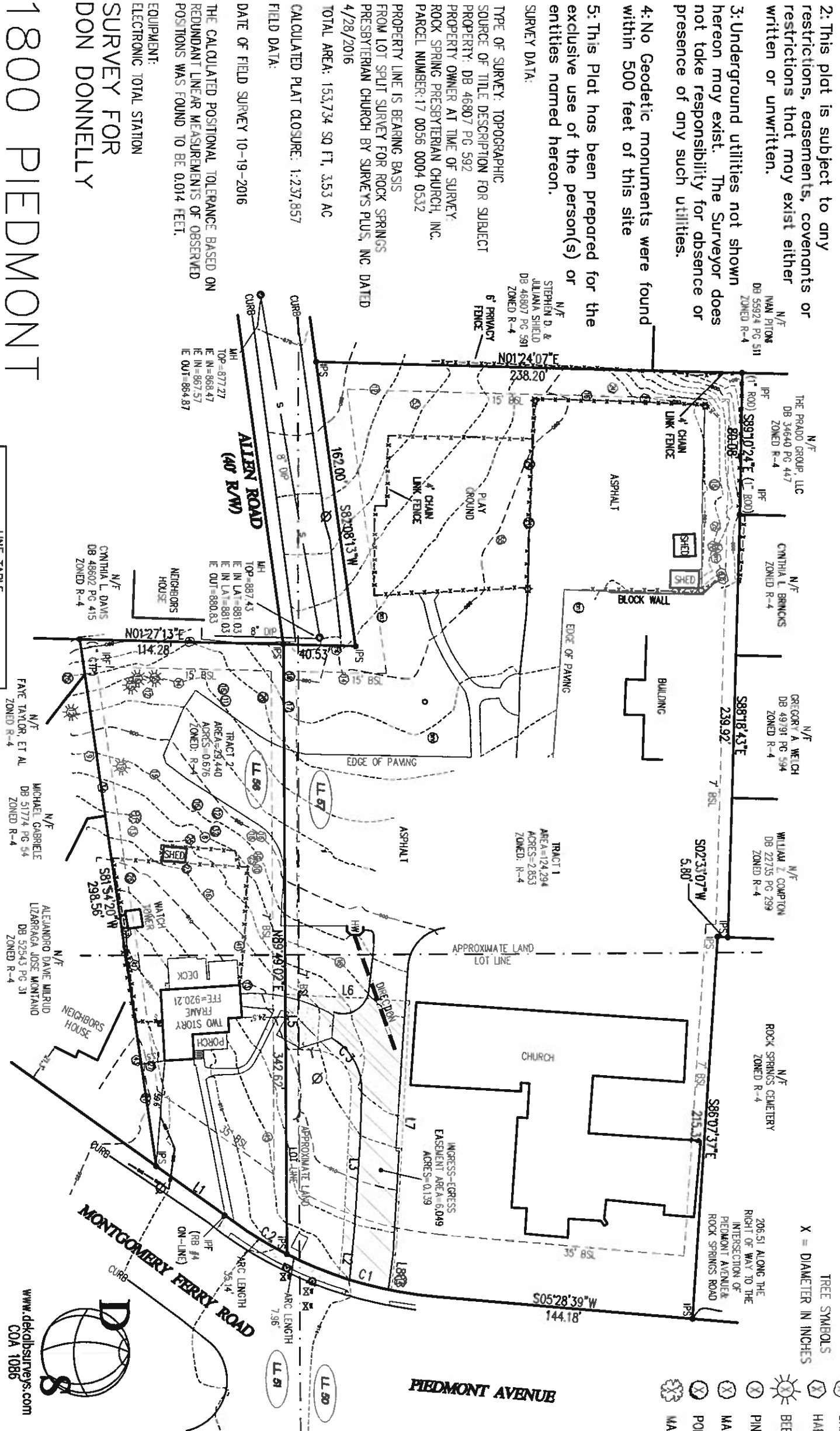


**GENERAL NOTES:**  
 1: This Plat has been prepared without the benefit of a current title report. Easements or encumbrances may exist that are not shown on this plat.  
 2: This plat is subject to any restrictions, easements, covenants or restrictions that may exist either written or unwritten.  
 3: Underground utilities not shown hereon may exist. The Surveyor does not take responsibility for absence or presence of any such utilities.  
 4: No Geodetic monuments were found within 500 feet of this site  
 5: This Plat has been prepared for the exclusive use of the person(s) or entities named hereon.

REFERENCE: DB 46807 PG 592  
 DB 48884 PG 7  
 LOT SPLIT SURVEY FOR ROCK SPRINGS PRESBYTERIAN CHURCH BY SURVEYS PLUS, INC. DATED 4/28/2016

FLOOD HAZARD NOTE: THIS PROPERTY IS NOT LOCATED IN A FLOOD HAZARD AREA AS DEFINED BY FIRM MAP OF FULTON COUNTY 13121C00261G DATED SEPTEMBER 18, 2013



**LINE TABLE**

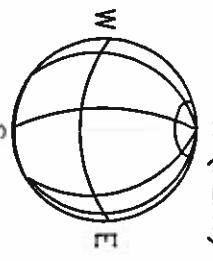
LINE	LENGTH	BEARING
L1	53.65	S35°59'46"W
L2	20.22	N83°30'25"W
L3	86.13	N86°44'15"W
L4	17.87	S03°3'56"W
L5	30.05	S89°49'02"W
L6	69.69	N03°13'56"E
L7	137.05	S86°44'15"E
L8	25.85	S83°30'25"E

**CURVE TABLE**

CURVE	LENGTH	RADIUS	BEARING	CHORD
C1	79.38	229.95	S15°22'03"W	78.99
C2	43.09	229.95	S30°37'37"W	43.03
C3	31.47	20.00	S48°18'44"W	28.32

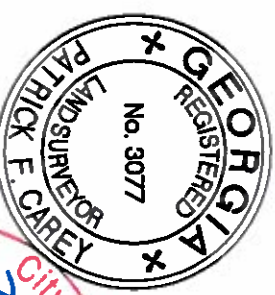
TREE SYMBOLS  
 X = DIAMETER IN INCHES

- ⊗ OAK
- ⊗ HARDWOOD
- ⊗ BEECH
- ⊗ PINE
- ⊗ MAGNOLIA
- ⊗ POPLAR
- ⊗ MAPLE



**LEGEND**

- ⊗ EOP EDGE OF PAVEMENT (CURB)
- ⊗ PP POWER POLE
- ⊗ R/W RIGHT OF WAY
- ⊗ IPF IRON PIN FOUND
- ⊗ PS 1/2" REBAR SET
- ⊗ SW SIDE WALK
- ⊗ CLEANOUT
- ⊗ OHP OVERHEAD POWER
- ⊗ FH FIRE HYDRANT
- ⊗ CB CATCH BASIN
- ⊗ MH MANHOLE
- ⊗ WM WATER METER
- ⊗ WV WATER VALVE
- ⊗ GV GAS VALVE
- ⊗ GM GAS METER
- ⊗ LP LIGHT POLE
- ⊗ CONCRETE PAD



FOR  
 DEKALB SURVEYS, INC.  
 407 W. PONCE DE LEON  
 SUITE B  
 DECATUR, GEORGIA 30030  
 404.373.9003  
 City of Atlanta  
 2-16-079  
 11/11/2016  
 Office of Planning

**1800 PIEDMONT AVENUE**  
 CITY OF ATLANTA, FULTON COUNTY, GEORGIA  
 LAND LOT 50, 51, 56 & 57, DIST 17  
 DATE: OCTOBER 21, 2016

THIS SURVEY WAS PREPARED IN CONFORMITY WITH THE TECHNICAL STANDARDS FOR PROPERTY SURVEYS IN GEORGIA AS SET FORTH IN CHAPTER 180-7 OF THE RULES OF THE GEORGIA BOARD OF REGISTRATION FOR PROFESSIONAL ENGINEERS AND LAND SURVEYORS AND AS SET FORTH IN THE GEORGIA PLAT ACT O.C.G.A. 15-6-67, AUTHORITY O.C.G.A. SECS. 15-6-67, 43-15-4, 43-15-6, 43-15-19, 43-15-22.

COPY RIGHT 2016-THIS 11 X 17 DRAWING AND REPRODUCTIONS ARE THE PROPERTY OF THE SURVEYOR AND MAY NOT BE REPRODUCED, PUBLISHED OR USED IN ANY WAY WITHOUT THE WRITTEN PERMISSION OF THIS SURVEYOR